



# International Students Inc.®



# OUR STORY

---



Joey & Jenn Sforza – Born, raised and reborn in Hudson County.

Both saved in 8th grade, separately! Plugged into student ministry right away in high school and college.

Cru as students 2006-2010 then we graduated college, got married and joined staff in May 2010.  
God's calling was so clear in 2010.

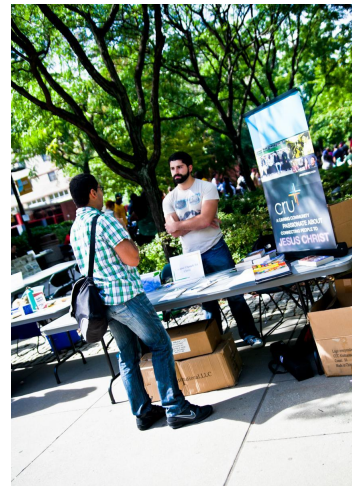
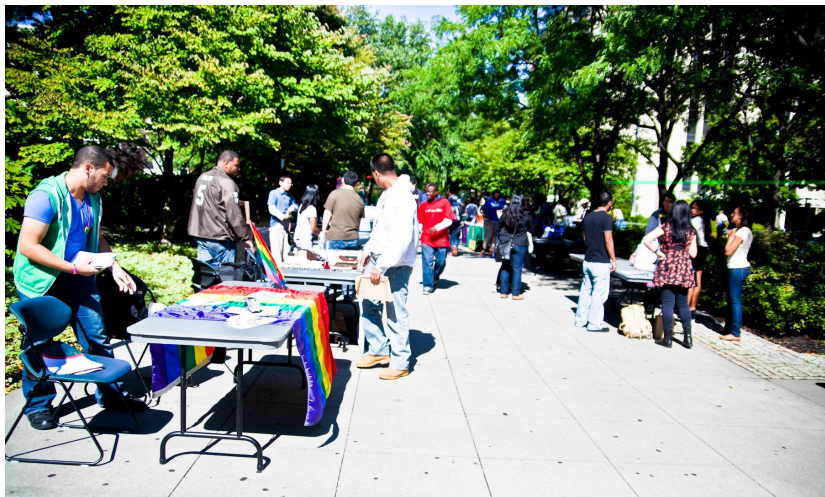
After 12 years on staff, God's calling to International Students Inc. was also exceedingly clear through one Hindu and immigrant student named "Raja Pratel."





# International Students Inc.®





## COMPETITION

---

-There is serious competition for the minds and hearts of students. It is spiritually dark for two main reasons--"worldview" and "lifestyle" challenges.

-If 8/10 American Christian students walk away, *imagine how hard for non-Christians international students who may have never heard of Christ!*

-75% of international students will never enter an American home. 80% will never enter a church!

# SO MANY CHALLENGES

---

*“While you are in this class, you will be expected to be an Agnostic or Atheist. Anyone with sincere religious beliefs will be expected to take off his religious hat”*

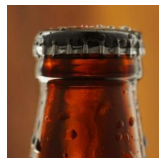
— PROFESSOR, UNIVERSITY OF TEXAS

*“My youngest son is attending the University of Oklahoma...[He] has been thoroughly brainwashed by his professors. He has lost his faith in God and has been taught that truth is relative.”*

— LETTER FROM A GRIEVED MOTHER

*Loneliness, homesickness, assimilation+language obstacles, overt or covert sin. The enemy is warring against international students.*

—JOEY SFORZA



A recent study by a task force on college drinking indicated that the following number of alcohol-related incidents occur each year among students in the U.S.: Nearly 600,000 injuries; 6,000 sexual assaults, more than 1,800 deaths.



# BUT GOD

---



In the face of these competitive forces, God is bringing an increasing number of students into a relationship with Himself through the work of ISI staff, students and churches.

## STRATEGIC IN REACHING THE WORLD

---



Jesus tells us to go and make disciples of all nations (Matthew 28:19-20). Each year, over 1 million international students attend our universities and colleges across the United States. 60% of those students come from the 10/40 window. God is bringing the nations to us!

Reach the campus. Reach the world! We are trusting God to reach the 150 million total college students of the world with the message of Christ. Each student. Every campus. As we reach the 1 million internationals here, they can go back and reach their countries and families for Jesus!

SEE THE NEED

SEE THE NEED

## THE NEED IS GREAT.

In this age of social media and instant communication, it might be hard to believe that nearly half of the world's population still lives in people groups that are largely unreached. The need is great, and it's not just international; it's in our neighborhoods. Take a look at where the unreached live and how you can join the Foursquare tribe in doing something about it.



### THE NEED IS GREAT.



**3,150,000,000**

individuals live in **6,992** people groups with very few, if any, believers.

**427**

UPGs each are over **1,000,000** in population.

**2,425**

people groups totaling **146,000,000** individuals have neither Scripture, *The Jesus Film*, or Christian recordings available in their primary language.

## THE NEED IS NEAR.

### THE NEED IS LOCAL.



**84**

UPGs are in the U.S.

**10,716,000**

in the U.S. population are unreached.



**1,043,839**

international students were received in the U.S. (2015/2016 school year).

*(Statistic: Open Doors)*



The top sending nations for international students are among the most unreached people groups. These sending nations are:

CHINA  
**328,547**

INDIA  
**165,918**

SAUDI ARABIA  
**61,287**

*(Statistic: Open Doors)*



**75%**

of international students will return to their countries having never been invited to an American home.



**80%**

of international students will never enter an American church.

*(Statistic: International Students Inc.)*

### FMI'S UNREACHED PRIORITY

**100%** of the Global Missions Fund goes to reaching the unreached and developing church planting movements to do the same.

**11** FMI area missionaries oversee and partner with other leaders to carry out the work of reaching unreached people around the world. Turn to **page 12** to learn about current projects.

*Unless otherwise noted, non-Foursquare statistics are from Joshua Project.*





## EVANGELISM

INTRODUCING STUDENTS TO JESUS.  
SOME HAVE NEVER HEARD THE  
GOSPEL CLEARLY EXPLAINED.

## We talk with students about Christ in many ways.

- » Hospitality - Weekly Dinners/Home Visits
- » Relational/Lifestyle Evangelism
- » Training+Culture of Evangelism
- » 1-on-1 Initiative With Friends + Family
- » Campus Outreaches, Club fairs, etc
- » Digital and Social Media w/Discernment (Not Public, Mostly Private Chats)





## DISCIPLESHIP

CREATING  
LIFE-CHANGING COMMUNITY



Our ministry is about changed lives.  
Not just converts or cliques. Growth in  
Christ for new and older believers  
alike!

# DISCIPLESHIP

CREATING  
LIFE-CHANGING COMMUNITY



**We help students grow in their relationship with God through:**

- » Church Involvement & Discipleship!
- » Staff Discipleship/Mentoring & Leadership Training
- » Weekly Campus Dinners (Prayer, Bible Study, Community)
- » Regional and National Conferences and retreats
- » Some are “discipled” even before they accept Christ!



From the university campus a great missionary force is being raised up and sent out to reach the world for Christ.

*“As the Father has sent me,  
I am sending you.”*

-- JESUS (JOHN 20:21)



## MULTIPLICATION

100% SENT!  
Life On Mission

- » Missionaries During College !
  - On campus w/classmates + friends
  - Family evangelism back home
  - Summer Break Missions?
- » After Graduation (here or back home!)
  - Ministry in the workplace
  - Full-time Christian work
  - Church involvement
  - Neighbors

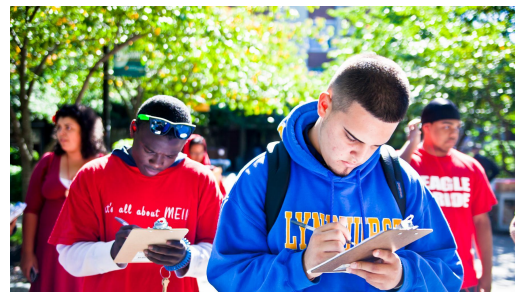


As part of the Jersey team, we are a part of the national vision to reach 1 million international students for Christ.

We are assigned to Stevens Institute of Technology, NJIT and Rutgers Newark.

## OUR SPECIFIC ROLE

---





# International Students Inc.®



Jesus tells us to go and make disciples of all nations (Matthew 28:19-20). Each year, over 1 million international students attend our universities and colleges across the United States. God is bringing the nations to us!



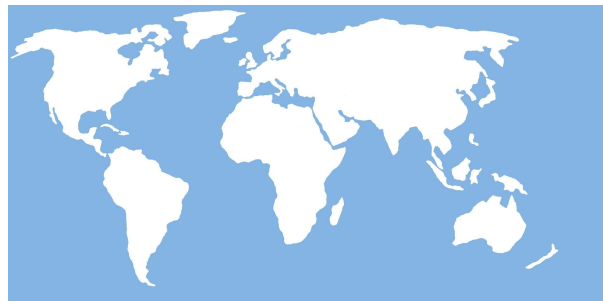
## OUR PAST

---



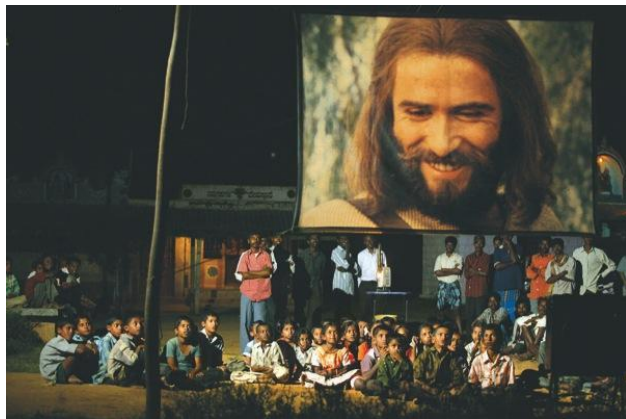
In 1951, **Dawson Trotman**, founder of The Navigators, spoke with **Bob Finley** about an outreach to foreign students arriving to study in the US. Soon, others joined Bob Finley in the work and ISI was founded in 1953.

## OUR PRESENT



International Students Incorporated has a global reach for Jesus by reaching international students and then sending them back as missionaries for Jesus all around the world!

What started as a ministry to international students at one campus, now touches the lives of people all over the world!



## OUR PAST, PRESENT AND FUTURE

---

» International Students Incorporated exists to share Christ's love with international students and to equip them for effective service in cooperation with the local church and others.

» Jesus tells us to go and make disciples of all nations (Matthew 28:19-20). Each year, over 1 million international students attend our universities and colleges across the United States. God is bringing the nations to us.





We invite others  
to partner with us  
to reach people  
for Christ.



ISI has no central funds for paying salaries and ministry expenses.

Like many other mission organizations, ISI depends upon the consistent financial support of concerned individuals and churches.

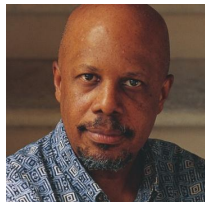
These contributions are used to fund the ministries of our staff members.



God has called our team. We simply must find them to be at 100% of our goal. Our current need is \$\_\_\_\_\_/month.

We must find a team of partners who will give \$100, \$500 monthly or some other amount to support our ministry.

As soon as this team is complete, we can turn our full attention to reaching people for Christ.



## OUR COMMITMENT

---

- » To work diligently to touch the lives of people for Jesus Christ.
- » To regularly let you know how God is blessing the ministry.
- » Mobilize churches+volunteers to join in the ministry.
- » To be financially faithful with the funds given for our ministry.
- » To share prayer concerns with one another.





## YOUR COMMITMENT

---



Your partnership can make a difference in reaching international students and therefore the world for Christ. You get an eternal inheritance in this work!

Would you make a monthly commitment of \$500, \$100 or some other amount?



There's another vital way you can help...

We just don't know enough people to reach our goal and expand our team.

Who do you know that you think would be encouraged to hear about this exciting work and that you could introduce me to?

NAMESTORMING SESSION! ...



# International Students Inc.®



Jesus tells us to go and make disciples of all nations (Matthew 28:19-20). Each year, over 1 million international students attend our universities and colleges across the United States. God is bringing the nations to us!